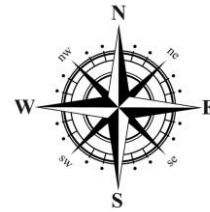


RED WINE BY THE BOTTLE

LONGITUDE & LATITUDE
37.5214° N, 76.1050° W



CABERNET SAUVIGNON

76.101 Columbia Crest, Washington
Bold medium bodied, aromas of cherry blossoms and rose petals with a perfect balance of earth, mineral and deep berry flavors 25

76.102 Simi, Sonoma County
Luscious mix of black and red fruits with a velvety texture 48

76.103 St. Supery, Napa Valley
Notes of blackberry, cassis, anise with a bit of apple skin, soft tannins and a long silky finish 57

76.104 Punch Cabernet, Napa Valley 2016 –
Classic hillside Napa Valley Cab style with deep concentration and exceptional complexity. Old-world-like velvety texture and a long, mouth-watering finish 58

76.105 Goldschmidt “Game Ranch” Oakville 2013
This tiny vineyard produces low yields with dense fruit. Exhilarating flavors of black cherry, intense anise, chocolate, currant, sage and mocha flavors explode on your palate. Smooth but firm tannins on the finish 165

ZINFANDEL

76.161 St. Francis ‘Old Vines,’ Sonoma County –
Classic old vine Zinfandel, aromas of cigar box raspberry, pepper and spice with flavors of ripe black cherry and vanilla bean followed a long luscious finish 42

MERLOT

76.121 Columbia Crest, Washington – Aromas of vanilla bean and mocha, dark chocolate covered cherries, caramel and nutmeg meld with silky tannins 25

76.122 Markham, Napa Valley– Dark ruby hues and aromas of fleshy plum mix with flavors of sweet espresso and black raspberry to form an intriguing blend 38

76.123 Rutherford Hill, Napa Valley – Lavish cherry fruit flavors are backed by a rich, balanced structure for an intensely complex merlot 46

PINOT NOIR

76.141 La Crema, Sonoma Coast
Aromas of lush cherry and red plum, flavors are ripe and elegant, red cherry and spice with a touch of earthiness and dark chocolate 43

76.142 Willamette Whole Cluster, Willamette Valley, Oregon
Opens with bright aromas of cherry and raspberry, the medium bodied mouth feel features chewy tannins and nicely balanced acidity 39

76.143 Erath, Oregon – Raspberry, black cherry and warming nutmeg scents offer a scintillating intro to a mouthful of mixed berries and pomegranate 36



COCKTAILS

SPRING GARDEN

St. George Green Chile Vodka, Green Chartreuse, Lazzaroni Maraschino, lime juice, shaken well and served in a chilled martini glass with lime zest 12
A MOUTHFUL OF FLAVORS

CHESAPEAKE NEW FASHIONED

Four Roses Bourbon, Canton Ginger, St. Germain, lemon juice, shaken well and served in a chilled martini glass, garnished with a cherry 10

PEACH FIZZ

Fresh Spring blend of SKYY peach vodka, Canton Ginger, peach puree, & lemon juice served over ice & topped with sprite, garnished with a lemon twist 9

PINEAPPLE EXPRESS

Smokey Xicaru Silver Mezcal, pineapple juice, agave syrup, shaken and strained over fresh ice in a hurricane glass, garnished with cilantro leaves 10

TATTERSALL TEA

Tattersall barrel aged gin infused with African Nectar Tea, shaken with honey syrup and lemon juice, served in a rocks glass with an Absinthe rinse, (anise & herbs) garnished with lemon zest 10
NOT YOUR TYPICAL SPIKED TEA, YOUR TASTE BUDS WILL FOOL YOU

POMEGRANTE GIMLET

Tito’s Vodka, PAMA liqueur, lime juice, simple syrup, shaken and served over ice, garnished with a lime wedge 10

VERY BERRY MULE

New Amsterdam Red Berry Vodka, strawberry puree, lime juice & topped with Goslings ginger beer 9.50
ASK ABOUT OUR DIFFERENT MULE FLAVORS!

SPICED RED SANGRIA

Burgundy wine, house-made mulling spices, peach schnapps, brandy & fresh juices 8.50

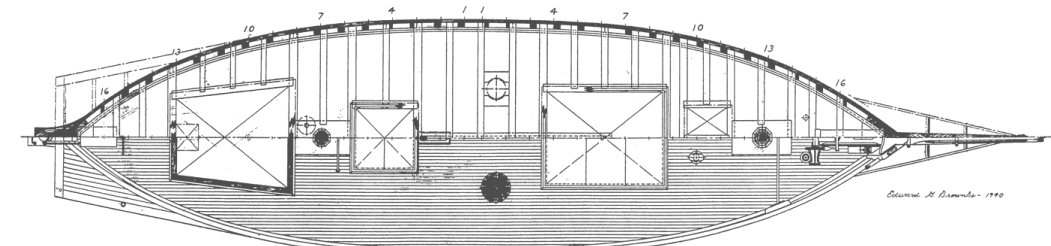


PLATE XVI B. STRUCTURAL PLAN OF FRAME BUGEYE Lizzie J. Cox.

WINE BY THE GLASS

WHITE SELECTION

6OZ/9OZ

ESTRELLA CHARDONNAY 6.75/9.50

Balanced wine with layers of vanilla, banana, pear, crisp apple, and a hint of oak finish

KENDALL-JACKSON CHARDONNAY, CA 10.50/14

Beautifully integrated tropical flavors such as pineapple, mango, and papaya with citrus notes

BREAD & BUTTER CHARDONNAY, CA 10.50/14

rich notes of vanilla bean and almond husk, balanced by a soft minerality and a hint of light woodiness from the oak. Just like that first bite of creme brulee with a long creamy finish

STRACCALI PINOT GRIGIO, ITALY 7.75/11

Light and crisp wine with light fruit and very dry. Perfect with pasta, white meat & seafood

CAVIT PINOT GRIGIO, ITALY 8.50/12

Balanced character, bright straw gold color, appealing aroma, and fruit flavors

ST SUPERY SAUVIGNON BLANC, NAPA, CA 10.5/14.25

Grapefruit and lime with fragrant fresh notes of citrus, with a bright crisp finish

OYSTER BAY SAUVIGNON BLANC, NZ 9.25/13.25

Balanced character, bright straw gold color, appealing aroma, and fruit flavors

GIESEN SAUVIGNON BLANC, NZ 8.75/11

Zesty and vibrant, with a rich base of tropical fruit, kaffir lime, lemongrass and herb aromas. Juicy acidity and a fresh, dry finish

CHATEAU ST. MICHELLE RIESLING, WA 7.75/11

Delivers sweet lime and peach characters with subtle mineral notes. This Riesling is a pleasure to drink

CORBETT CANYON WHITE ZINFANDEL, CA 6.75/9.50

Aromas of ripe strawberries and raspberries with the perfect amount of sweetness

KORBEL BRUT, CA 9/SPLIT

light tasting and crisp with a balanced, medium dry finish

RIONDO PROSECCO, ITALY 9/SPLIT

An authentic sparkling wine that celebrates the easy-living spirit of Italy. This vino frizzante boasts fresh aromas of Golden Delicious apple, pear, and acacia blossom.

RED SELECTION

6OZ/9OZ

MIRASSOU PINOT NOIR 8.75/12.50

Balanced intense fruit flavors with delicate aromas and subtle hints of oak

MAC MURRAY PINOT NOIR 12/15.75

Grapes selected from the Russian River Valley, giving it rich aromas and flavors of raspberry, cherry, lavender, and boysenberry

CANYON ROAD MERLOT 8.50/11

Deep flavors of rich cherries and blackberries followed by hints of vanilla and spice

ESTRELLA CABERNET SAUVIGNON 6.75/9.50

Black currant aroma with rich flavors of black cherry and raspberry, with hints of vanilla and white pepper

SOUVERAIN CABERNET SAUVIGNON 9/12.75

Beautiful blend of deep fruitiness, black cherry, blackberry, chocolate, cloves, & coffee

ALAMOS MALBEC, ARGENTINA 9/12.75

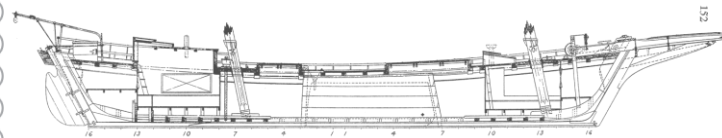
Notes of ripe concentrated cassis and black raspberry with a touch of chocolate & sweet spice

UNDERWOOD ROSÉ, OREGON 9/13

Straight from the Rosé City! Strawberry, watermelon & peach notes & aroma can be found in this varietal. Touch of sparkling sensation as you sip & enjoy this delight.

LOUIS BERNARD CÔTES DE PROVENCE ROSÉ, FRANCE 8.75/11

Bright, pale rose-petal hue. Enticing aromas of pomegranate and passion fruit. Its mouth is generous, dry and supple.



WHITE WINE BY THE BOTTLE

LONGITUDE & LATITUDE

37.5214° N, 76.1050° W

CHARDONNAY

37.501 Sebastiani, Sonoma – A luscious blend of lemon curd, yellow apple, vanilla and caramel apple with careful use of oak barrels 29

37.502 Frei Brothers, Russian River – Soft and complex wine, flavors of green apple, orange zest and apple pie, rich nutty flavors and a silky finish 36

37.503 La Crema, Sonoma Coast – intriguing interplay of lively citrus and subtle toasted oak, while well balanced acidity creates a lovely vibrancy 42

37.504 Stag's Leap, Napa – Crisp and fresh, with aromas of orange blossom, lemon oil and toasted brioche with sweet cream apple butter finishing 55

37.505 "The Cutrer," Sonoma-Cutrer, Russian River – The fruit aromas of fresh sliced apple and Asian pear are complimented with citrus notes of lime zest, grapefruit, and lemon and a floral touch of honeysuckle and orange blossom 70

PINOT GRIGIO

37.521 Colimoro, Italy – Flavors of white peach, honeysuckle, and ripe lemon. Full-bodied, with great balance and a green apple finish 29

37.522 Kettmeir, Italy – Bright golden hue with a nose of pear & apple fragrances, with hints of floral and citrus 37

37.523 Santa Margherita, Italy – Straw yellow in color with a clean, crisp fragrance with intense yet elegant hints of quince. Fresh, harmonious fruit set off by slight sweetness with a long finish full of delicate, tangy flavor 48

ROSE

37.591 Fleur de Mer, Côtes de Provence, France Aromas and flavors of fresh watermelon, cherry, subtle citrus, and lavender. It is medium-bodied, fresh and elegant with a soft texture and mineral finish. Balanced and refreshing acidity. 32

SAUVIGNON BLANC/FUME BLANC

37.541 Brancott, New Zealand – Aromas of rock melon, lemongrass and ripe gooseberry dominate with notes ranging from tropical grapefruit to sweet bell pepper 29

37.542 Chateau St. Michelle Horse Heaven, Washington

Aromas of ripe pear, notes of citrus fruit with vibrant character and refreshing, crisp quality 29

37.543 Ferrari-Carano, Fume Blanc, Napa – Aromas of lime, kiwi, citrus, melon & a touch of grass complimented by flavors of grapefruit, lemon & lime with mango & guava finish 33

37.544 White Haven, New Zealand – Full flavored, medium bodied with vibrant peach, tropical fruit and gooseberry aromas with freshly cut herb undertones 34

37.545 St. Supery Dollarhide, Napa

Aromas of grapefruit, lime and Key lime are encompassed by smoky oak with lemon rind, anise and a subtle earthen element of wet slate 55

RIESLING

37.561 Saint M, Pfalz, Germany – A medium-bodied, off-dry Riesling with a fine fruitiness that lingers lovingly on the palate and then fades gently into a medium-long, dry-tasting finish 21

37.562 Chateau St. Michelle Dry Riesling, Washington A dry, refreshing style of Riesling with beautiful fruit flavors, crisp acidity and an elegant finish. It offers inviting sweet citrus aromas and flavors. This is an incredibly versatile food wine and pairs well with oysters 23

CHAMPAGNE/SPARKLING WINE

37.581 Korbel Brut, Sonoma – light tasting and crisp with a balanced, medium dry finish 9 split bottle/32 full bottle

37.582 Pasqua Prosecco – A sophisticated bouquet with velvety bubbles 24

37.583 Veuve Cliquot Brut, Champagne, France – subtle notes of white peach, anise, biscuit, and kumquat. Refined finish echoes a smoky note half bottle/52